





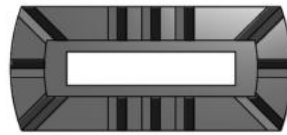




AS Schöler GmbH

Übersicht Produktgruppe 09

 <p>KF</p>	 <p>KFW</p>
 <p>PF</p>	 <p>RF</p>
 <p>UF</p>	 <p>KK</p>



KF 15x3

Keramiking - Typ
max. Ankerfülllänge
max. Ankerfüßbreite

02 Flachanker

07 Flachstifte

KF 15 x 3 | KF 15 x 5 | KF 16 x 4 | KF 25 x 3 | KF 25 x 5

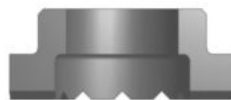


KFW 13x6

Kerankring - Typ
max. Ankerfüßlänge
max. Ankerdurchmesser

01 Wellenanker

KFW 11 x 5 | KFW 13 x 6 | KFW 17 x 8



PF (P) - 10

Keramiring - Typ
Alte Bezeichnung
max. Schrafburchmesser

05 Gewindebolzen PD/ Stifte IP

PF(P)-6 | PF(P)-8 | PF(P)-10 | PF(P)-12 | PF(P)-16 | PF(P)-20 | PF(P)-24



RF (R) - 10

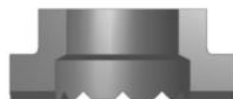
Keramikring - Typ

Alte Bezeichnung

max. Schaftdurchmesser

05 Gewindebolzen RD

RF(R)-6 | RF(R)-8 | RF(R)-10 | RF(R)-12 | RF(R)-16 | RF(R)-20 | RF(R)-24



UF (N) - 10

Keramikring - Typ

Alte Bezeichnung

max. Schaftdurchmesser

03 KS/ SF/ SY

05 DRS/ FFS/ IPS/ TPS

06 Isolierstift

07 Gewindebolzen PD

UF(N)-6 | UF(N)-8 | UF(N)-10 | UF(N)-12 | UF(N)-13 | UF(N)-16 | UF(N)-19 | UF(N)-22 | UF(N)-25



Kunststoffkappe

für Wellenanker und Gewindestifte