





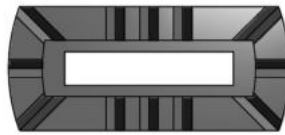




AS Schöler GmbH

Product overview 09

 <p>KF</p>	 <p>KFW</p>
 <p>PF</p>	 <p>RF</p>
 <p>UF</p>	 <p>KK</p>



KF 15x3

Ferrules type

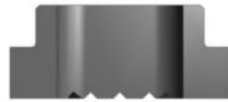
Anchor width

Anchor thickness

02 Flat bar anchor

07 Rectangular stud

KF 15 x 3 | KF 15 x 5 | KF 16 x 4 | KF 25 x 3 | KF 25 x 5



KFW 13x6

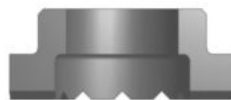
Ferrules type

Anchor width

Anchor diameter

01 Round bar anchor

KFW 11 x 5 | KFW 13 x 6 | KFW 17 x 8



PF (P) - 10

Ferrules type

Former mark

Shank diameter

05 Threaded studs PD/ Stud IP

PF(P)-6 | PF(P)-8 | PF(P)-10 | PF(P)-12 | PF(P)-16 | PF(P)-20 | PF(P)-24



RF (R) - 10

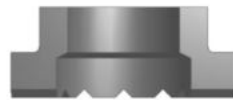
Ferrules type

Former mark

Shank diameter

05 Threaded studs RD

RF(R)-6 | RF(R)-8 | RF(R)-10 | RF(R)-12 | RF(R)-16 | RF(R)-20 | RF(R)-24



UF (N) - 10

Ferrules type

Ferrule mark

Shank diameter

03 KS/ SF/ SY

05 DRS/ FFS/ IPS/ TPS

06 Insulation pin

07 Threaded studs PD

UF(N)-6 | UF(N)-8 | UF(N)-10 | UF(N)-12 | UF(N)-13 | UF(N)-16 | UF(N)-19 | UF(N)-22 | UF(N)-25



Plastic cap

for round bar anchors and Threaded studs